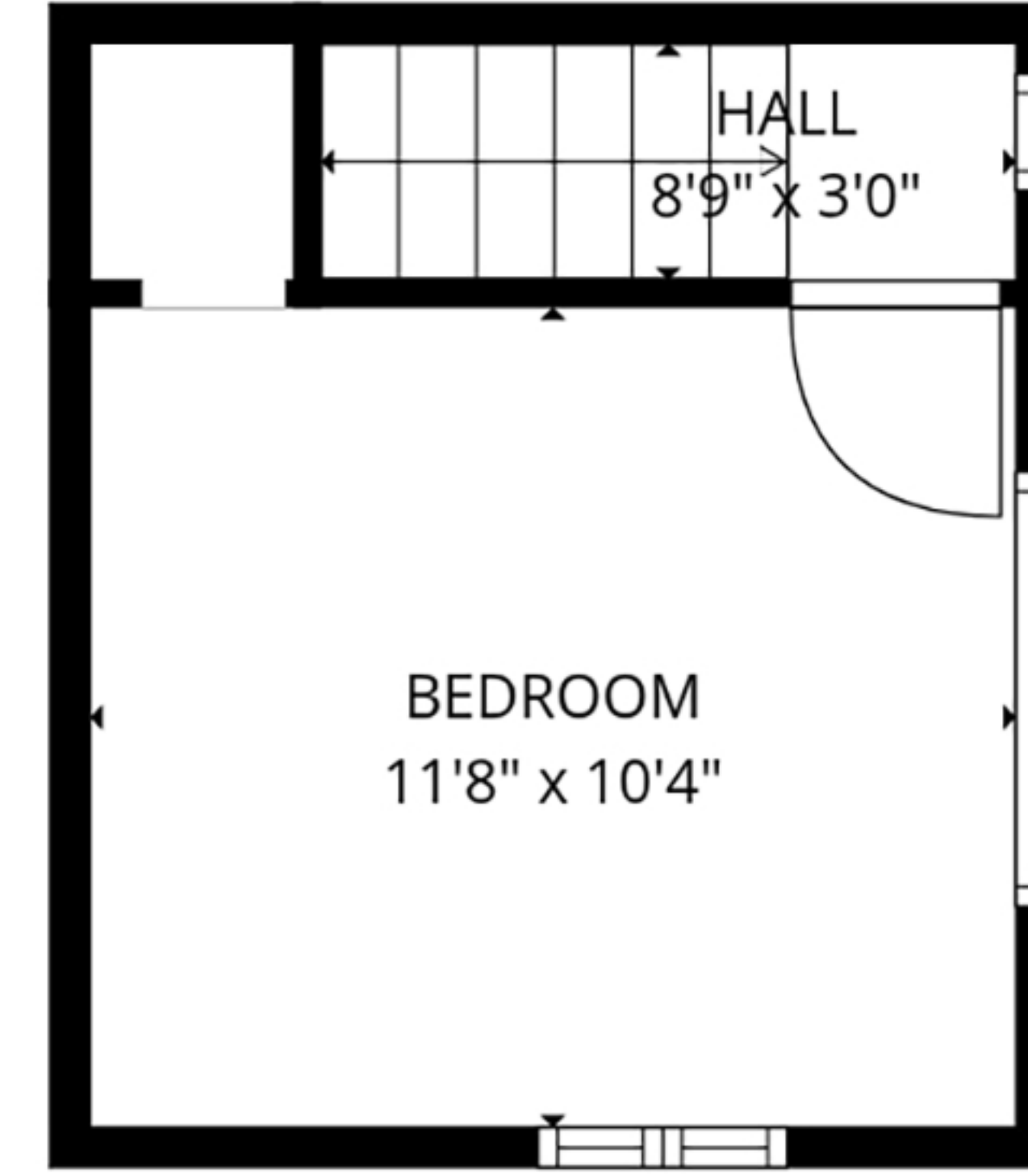
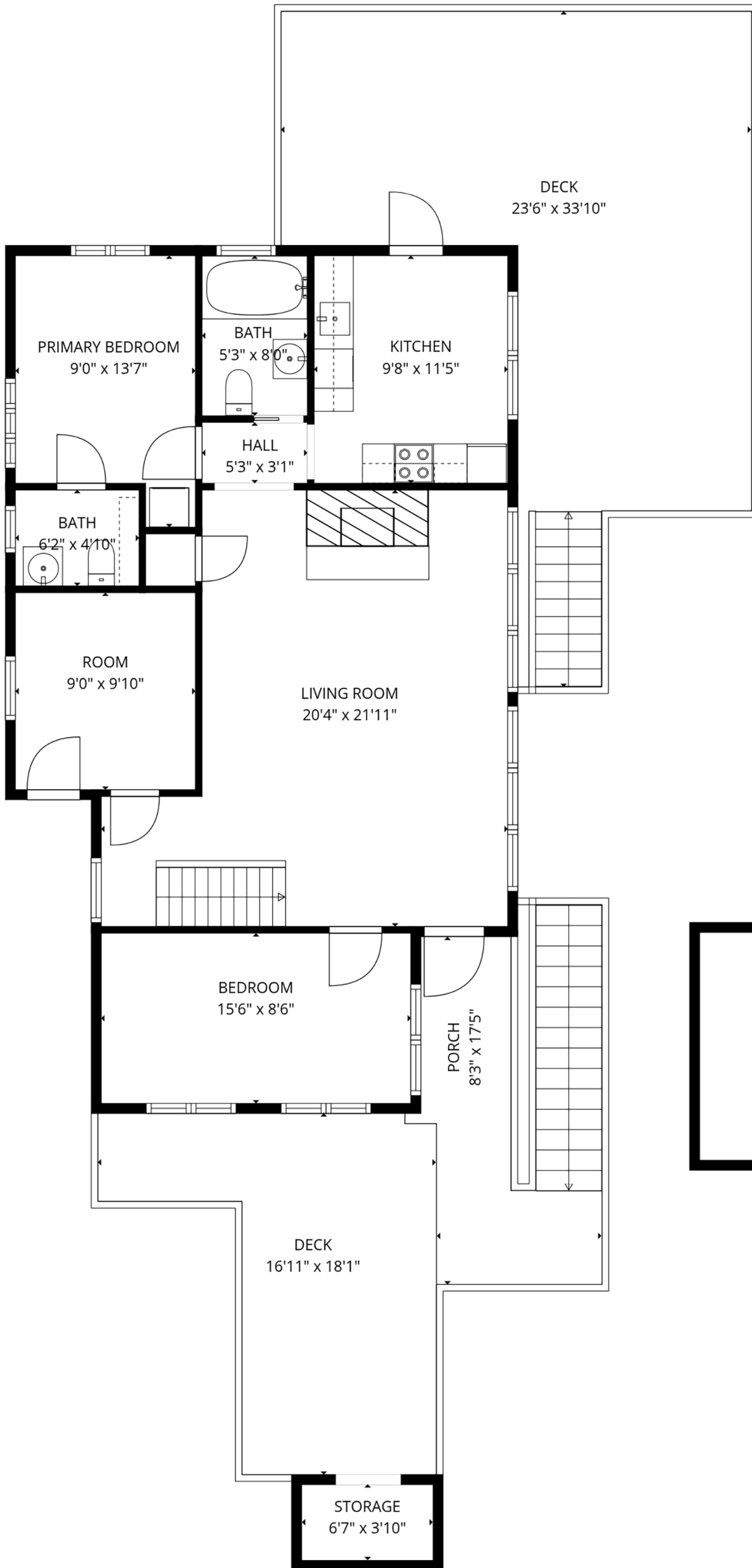
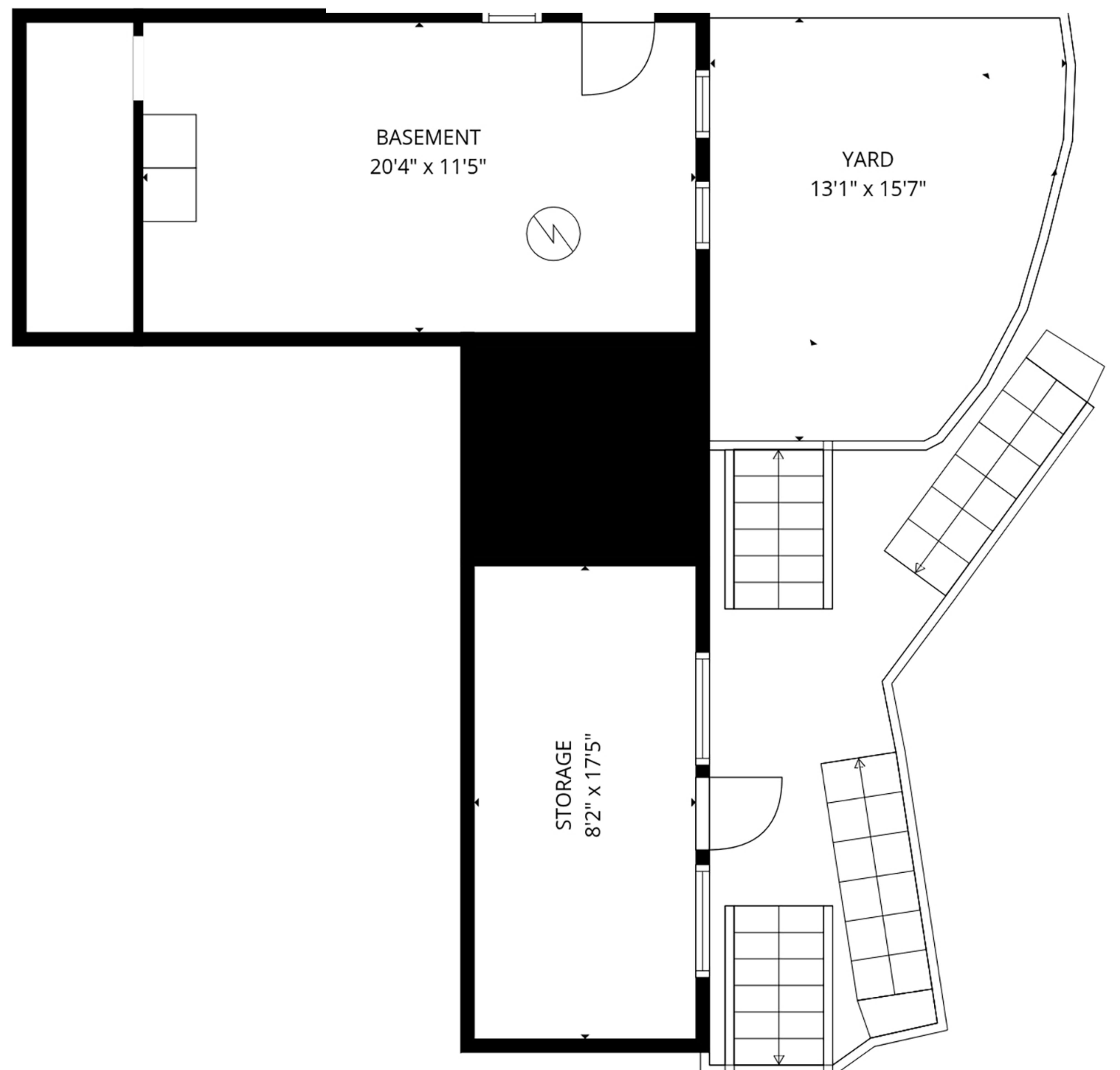


128 Boot Cove Rd



Approximate sq ft:
Main level: 1050 sq ft
Decks: 700 sq ft
Upper level: 175 sq ft
Lower level (unfinished): 400 sq ft



Prepared for the exclusive use of Michael Vautour and Dockside Realty Ltd.
All measurements are approximate and buyer to verify if important.

